

2024 1

2024 3 31

2024 4 19

**§1**

2024 4 18

2024 1 1      2024 3 31

**§2**

	920187
	2022 7 29
	147,949,215.29
	( )
	$\times 85\%+ 800$ $\times 3\%$ $\times 12\%+$

	A	C
	920187	970193
	134,834,406.03	13,114,809.26

" "

>

<

§3

)à >ÉîÉîÉàY @O 9,5'™ @ @ p

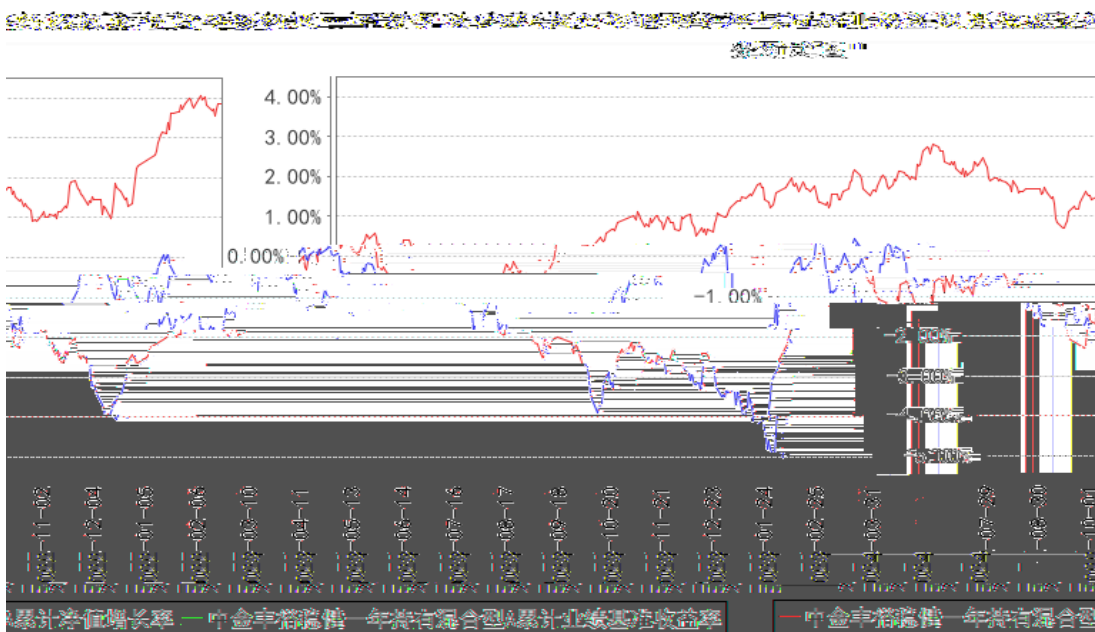
3.1

	-0.52%	0.24%	3.85%	0.15%	-4.37%	0.09%
--	--------	-------	-------	-------	--------	-------

C

	1.80%	0.34%	1.90%	0.18%	-0.10%	0.16%
	1.29%	0.29%	2.12%	0.15%	-0.83%	0.14%
	0.18%	0.26%	2.60%	0.14%	-2.42%	0.12%
	-1.41%	0.24%	3.84%	0.15%	-5.25%	0.09%

### 3.2.2



**§4**

**4.1**

					2015
					2018
		2022 7 29	-	8.76	A

2017

2022 7  
29

- 14.75

10

-

---

--	--	--	--	--	--

(1)

" "

" "

(2)

" " " "

(3)

(4)

(5)

4.2

4.3

4.3.1

4.3.2

		5%				
<b>4.4</b>				10	MLF	20bp
					2	
A	4~5		2004-2008	2008~2013		2014~2019
2020~2024	A					
		A				1~3
				A		
			1	A		
				A		

			%
1		31,975,936.47	12.87
		31,975,936.47	12.87
2		-	-
3		179,906,903.07	72.42
		179,906,903.07	72.42
		-	-
4		-	-
5		-	-
6		17,000,170.00	6.84
		-	-
7		19,486,928.05	7.84
8		39,345.00	0.02
9		248,409,282.59	100.00

7,862,962.04

4.44%

5.2

5.2.1

			%
A		1,449,850.00	0.82
B		-	-
C		15,006,399.43	8.47
D		-	-
E		520,425.00	0.29
F		3,051,789.00	1.72
G		1,178,820.00	0.67
H		-	-
I		2,905,691.00	1.64
J		-	-
K		-	-
L		-	-
M		-	-
N		-	-
O		-	-
P		-	-



Q		-	-
R		-	-
S		-	-
		24,112,974.43	13.61

## 5.2.2

		%
	-	-
	-	-
	1,135,128.60	0.64
	1,247,666.63	0.70
	2,431,244.72	1.37
	-	-
	-	-
	2,084,987.47	1.18
	963,934.62	0.54
	-	-
	-	-
	7,862,962.04	4.44

## 5.3

## 5.3.1

				%
1	000858	11,000	1,688,610.00	0.95
2	000568	8,400	1,550,556.00	0.88
3	00981	106,278	1,460,610.22	0.82
4	03968	51,500	1,444,972.71	0.82
5	603565	133,200	1,178,820.00	0.67
6	00168	23,274	1,135,128.60	0.64
7	01658	266,000	986,272.01	0.56
8	00700	3,500	963,934.62	0.54
9	002078	61,800	899,808.00	0.51
10	002727	44,400	847,152.00	0.48

## 5.4

			%
1		13,173,630.14	7.44
2		-	-
3		10,484,251.37	5.92
		-	-
4		22,672,702.75	12.80

5		-	-
6		113, 550, 999. 60	64. 10
7		20, 025, 319. 21	11. 30
8		-	-
9		-	-
10		179, 906, 903. 07	101. 55

## 5.5

						%
1	019727	23	24	130, 000	13, 173, 630. 14	7. 44
2	2020044	20				

5. 10. 2

5. 10. 3

5. 11

5. 11. 1

5. 11. 2

5. 11. 3

1		39,345.00
2		-
3		-
4		-
5		-
6		-
7		-
8		39,345.00

5. 11. 4

				%
1	110081		5,217,609.14	2.95
2	128108		2,214,768.15	1.25
3	127022		2,092,142.73	1.18
4	110047		1,931,709.15	1.09
5	128124		1,826,765.29	1.03
6	118000		1,815,126.71	1.02
7	113530		1,584,842.99	0.89
8	113033		1,023,666.20	0.58
9	118031	23	934,116.46	0.53

10	110063	19	619,019.20	0.35
11	123049		399,674.87	0.23
12	123063		276,900.82	0.16
13	113606		88,977.50	0.05

5.11.5

5.11.6

**§6**

	A	C
	185,702,796.78	14,895,765.03
	4,875.81	10,468.96
:	50,873,266.56	1,791,424.73
" -"	-	-
	134,834,406.03	13,114,809.26

**§7**

7.1

7.2

**§8**

8.1

20%

8.2

1.

**§9**

9.1

9.2

1 3 B 42

9.3

800-810-8802

| (010)6505-0105

[www.ci.cc.com](http://www.ci.cc.com)

2024 4 19